

TYRE RETREADING TOOLS & ACCESSORIES



ROLLER BEARING STITCHER

Order No.	Description
690-00	Roller Stitcher Bearing, 1 1/2" x 1/8" (40 x 3 mm)
690-10	Roller Stitcher Bearing, 2" x 1/4" (50 x 10 mm)
690-03	Roller Stitcher Bearing, 2" x 1/8" (50 x 3 mm)
690-91	Needle Roller Bearing, 2" x 2" (50 x 50 mm)

ELRICK BRANDER - 1/2" / 1/4 "

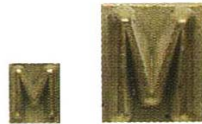
* Holds up to 9 one-half inch letters or 11 one-quarter inch letters



Fast heating 300 watt, transverse mounted heating element. "T" slotted branding head makes letter insertion a snap. Built-in stand allows hot tool to be set almost anywhere.

Order Code	Description
901-99	Brander 240V

LETTER AND NUMBER SETS FOR TYRE BRANDERS



Order Code	Description	Order Code	Description
901-22	A Thru Z 1/4"	901-20	A Thru Z 1"
901-02	0 thru 9 1/4"	901-00	0 thru 9 1"
901-21	A Thru Z 1/2"		
901-01	0 thru 9 1/2"		

TYRE MARKING CRAYON



Order Code	Description
900-00	Round Yellow - 10 per box

FAST TRIM VENT KNIVES

TRIMMER BLADE



Trim vent excess and mold flow from a retreaded tyre in 15 seconds. Guide on the handle with roller bearing positions multi-grooved blade. Removable blade trims approximately 3000 tyres.

Order No.	Description
630-10	Trimmer Blade - 9 teeth
630-13	Fast Trim Vent Knives

SILICON LUBRICATED

* Remove Envelope Easier

A waterbase Fluid concentrated silicone. Spray or apply on a hot envelope and allow it to evaporate. Re-apply when the envelope shows signs of sticking. Non-toxic and non-flammable.



Order Code	Description
920-51	25 Liters Silicon Lubricated

TYRE REPAIR KNIVES



Tyre repair rubber knife made from High Carbon steel and riveted wooden handle.

Order No.	Description
630-30	4" Taper Point Knife
630-33	4" Flexible Blade Skiving Knives
630-36	3 3/8" Extra Curve Sharp Point Knives